



# B&S BLACK SERIES: IN-W2-8-HS

## Two Hole Induction Wok - 8 Kilowatt - High Splashback

Project: \_\_\_\_\_ Item: \_\_\_\_\_

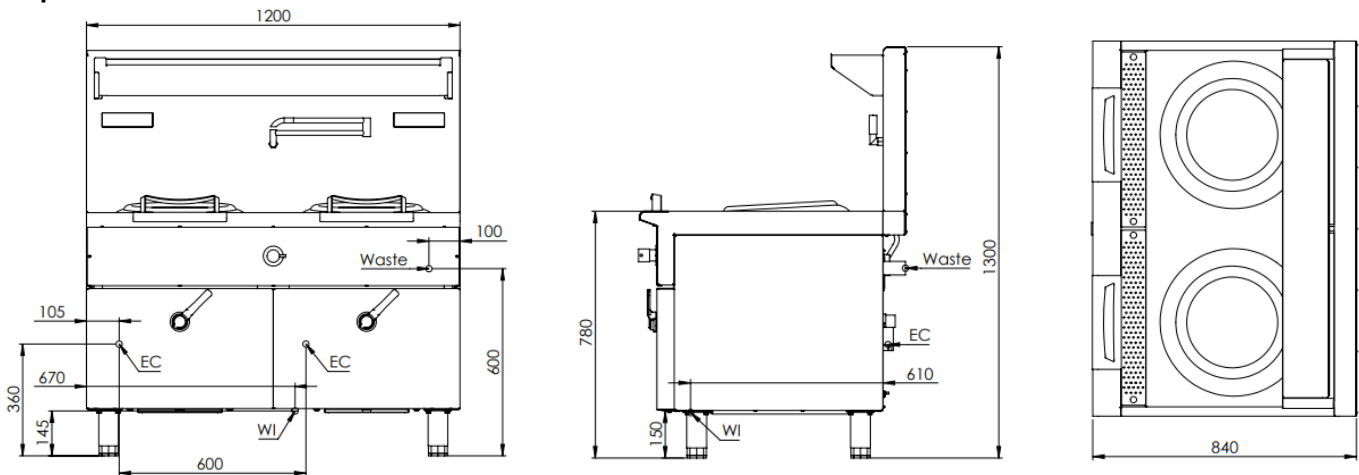


IN-W2-8-HS

### Standard Features:

- AISI Grade Stainless Steel
- Heavy duty complete stainless steel frame
- One-piece machine pressed top deck - 1.5mm Thick
- Seamless micro glass top - 340mm
- IPProfessional cooking system incorporates high performance
- High frequency heating coil and magnetic aggregation technology
- Isolated bottom ensures safety and reliability
- Rotary lever handle allowing up to 8 different heating levels
- Automatic detection cookware system ensures safer cooking
- IP65 rated LED dot matrix display
- Manually operated laundry arm and spindle
- Front waste gutter allows for greater ease in cleaning
- Front access to all components makes service easy
- Induction wok pan provided - 400mm

### Specifications:



MODEL	LENGTH (mm)	DEPTH (mm)	HEIGHT (mm)	NET WEIGHT (kg)
IN-W2-8-HS	1200	840	1300	115

### Connections:

ELECTRICAL CONNECTION (EC)	WATER (WI)	ELECTRICAL SUPPLY REQUIREMENTS						
		VOLTAGE (V)	TYPE	FREQUENCY (Hz)	POWER (kW)	L1 AMPS (A)	L2 AMPS (A)	L3 AMPS (A)
Hard Wired	½" Threaded	415	3P+N+E	50/60	8+8	12.5	12.5	12.5

- **Must be installed by an authorised installer in accordance to AS/NZS 3000 refer to current version**

Due to ongoing Product Development, Product Improvement and Research, B+S Commercial Kitchens reserves the right to alter specification without notice.

**Electromagnetic Compatibility: AS/NZS CISPR 14.1, EN IEC 55014-1:2021**



B+S Commercial Kitchens  
57 Plateau Road Reservoir VIC 3073 Australia | +61 3 9469 4754  
info@bscommercialkitchens.com | www.bscommercialkitchens.com

