

Project: _____ Item: _____



HLTLD-C12

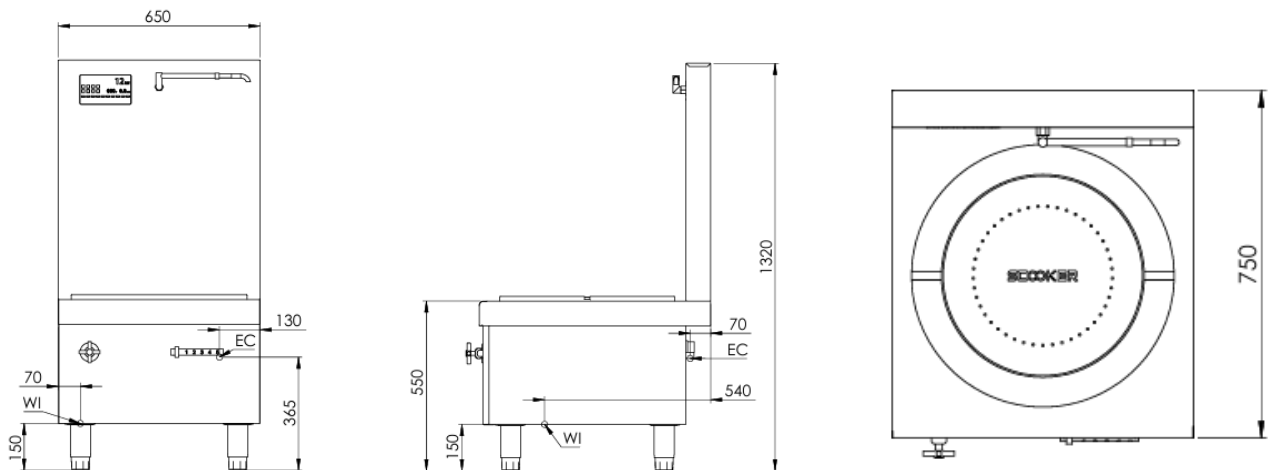
Standard Features:

- AISI grade stainless steel
- Heavy duty complete stainless steel cabinet frame
- One-piece machine pressed top deck - 1.2mm thick
- Seamless microcrystalline glass plate - 430mm diameter
- Full coverage base coil to ensure even heating dispersion and efficiency
- Built-in thermal insulation layer saves energy and improves efficiency
- 5 Stage magnetic slide control to adjust heating levels
- Intuitive IPX5 rated display illustrates output power, cumulative energy consumption, malfunction codes and allows menu programming
- Manually operated laundry arm and spindle
- Front access to all components makes service easy
- Stock pot with release valve - 170 L (600mm Dia x 600mm H)

Options:

- SCCS - Non-swivel rear castors - Set of two
- SCPK - Plinth Kit

Specifications:



| MODEL | LENGTH (mm) | DEPTH (mm) | HEIGHT (mm) | NET WEIGHT (kg) |
|-----------|-------------|------------|-------------|-----------------|
| HLTLD-C12 | 650 | 750 | 1320 | 60 |

Connections:

| ELECTRICAL CONNECTION (EC) | WATER (WI) (BSP) | ELECTRICAL SUPPLY REQUIREMENTS | | | | |
|----------------------------|------------------|--------------------------------|------|----------------|------------|---------------------|
| | | VOLTAGE (V) | TYPE | FREQUENCY (Hz) | POWER (kW) | L1, L2, L3 AMPS (A) |
| Hard Wired | ½" (M) | 415 | 3P+E | 50/60 | 12 | 18 |

- **Must** be installed by an authorised installer in accordance to **AS/NZS 3000** refer to current publications

Due to ongoing Product Development, Product Improvement and Research, B+S Commercial Kitchens reserves the right to alter specifications and the design of the product without notice.

Electromagnetic Compatibility: AS/NZS CISPR 14.1