



K+ SERIES: KGRP-9 900mm Grill Plate on Stand

Project: _____ Item: _____



KGRP-9

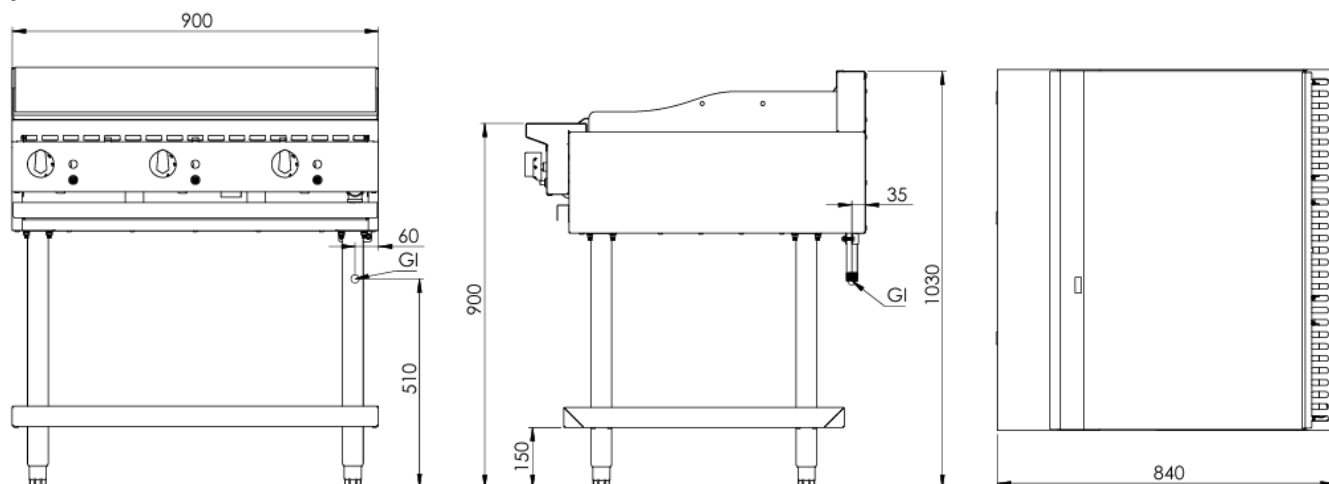
Standard Features:

- AISI grade stainless steel
- Heavy duty complete stainless steel frame with undershelf
- 22MJ aluminised tube burner per 300mm section
- Heavy duty 20mm thick mild steel grill plate
- Top welded surface, smooth finish design
- Grill plate cooking area - 895mm W x 550mm D
- Flame failure device included as standard
- Piezo ignition to pilot grill plate burner
- Multi-setting gas valve allows greater regulation of flame settings
- Easy access to all components for servicing and adjustments
- Easy to clean fat spillage tray and rear splashback heat deflector

Options:

- NG/LPG - Available in Natural or LP Gas
- BM - Bench mounted
- CS - Non-swivel rear castors - Set of two

Specifications:



MODEL	LENGTH (mm)	DEPTH (mm)	HEIGHT (mm)	NET WEIGHT (kg)	GAS CONSUMPTION (MJ/h)	
					NG	LPG
KGRP-9	900	840	1030	145	66	66

Connections:

GAS (GI) (BSP)	SUPPLY PRESSURE (kPa)	
	NG	LPG
3/4" (M)	1.0	2.6

- Gas regulator is supplied with the unit
- The unit must be installed by an authorised installer in accordance to **AS/NZS5601 refer to current version**

Due to ongoing Product Development, Product Improvement and Research, B+S Commercial Kitchens reserves the right to alter specifications and the design of the product without notice.

Approval Number: GMK 10703



B+S Commercial Kitchens
57 Plateau Road Reservoir VIC 3073 Australia | +61 3 9469 4754
info@bscommercialkitchens.com | www.bscommercialkitchens.com

