



# B+S BLACK SERIES: RF-2

## Two Pan Rapid Fryer

Project: \_\_\_\_\_ Item: \_\_\_\_\_



RF-2

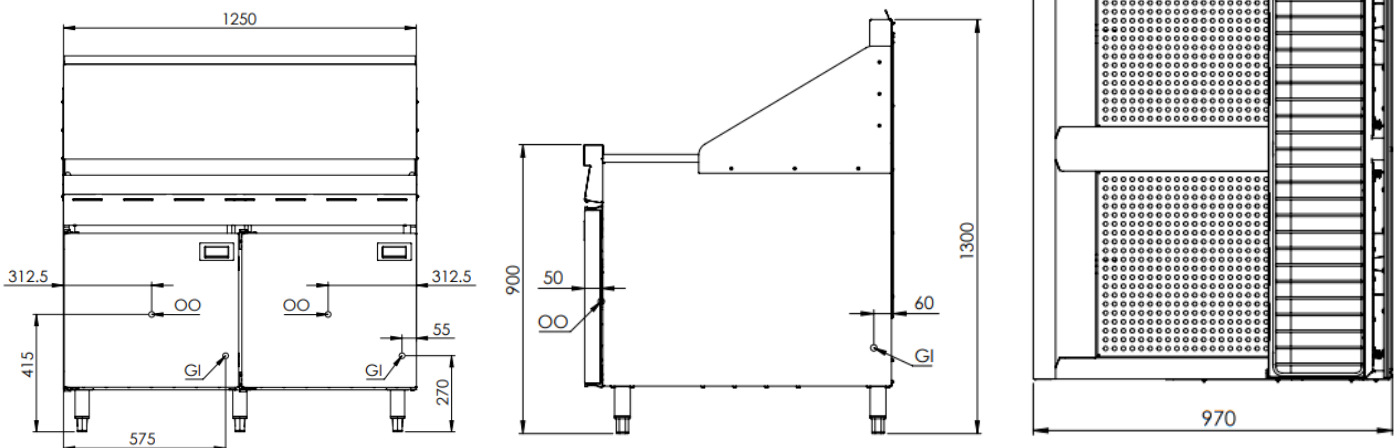
### Standard Features:

- AISI 304 Grade Stainless Steel
- Stainless steel constructed pan with center cool zone – 2mm Thick
- Efficient multi-jet target burner
- +/- 3°C temperature recovery differential
- Over-temperature safety cut-out switch
- 40L oil capacity per pan
- Flame failure fitted as standard
- Stainless steel fish plate and night covers included
- Front access to all components makes service easy
- Pan Dimensions: 510mm L x 510mm W x 70mm H (Height is measured from the base plate to the oil level mark)
- 24 Month Warranty

### Options:

- Natural or LP Gas
- Non-swivel rear castors
- Baskets are **not** included

### Specifications:



MODEL	LENGTH (mm)	DEPTH (mm)	HEIGHT (mm)	GAS CONSUMPTION (MJ/h)	
				NG	LPG
RF-2	1250	970	1300	270	270

### Connections:

GAS (GI) (BSP)	OIL OUTLET (OO) (BSP)	SUPPLY PRESSURE (kPa)	
		NG	LPG
¾" (M)	1 ¼" (F)	1.0	2.6

- Combination control valve with inbuilt regulator is supplied within the unit
- **Must** be installed by an authorised installer in accordance to **AS/NZS5601.01**

Due to ongoing Product Development, Product Improvement and Research, B+S Commercial Kitchens reserves the right to alter specification without notice.

Approval Number: GMK 10683



B+S Commercial Kitchens  
57 Plateau Road Reservoir VIC 3073 Australia | +61 3 9469 4754  
info@bscommercialkitchens.com | www.bscommercialkitchens.com

